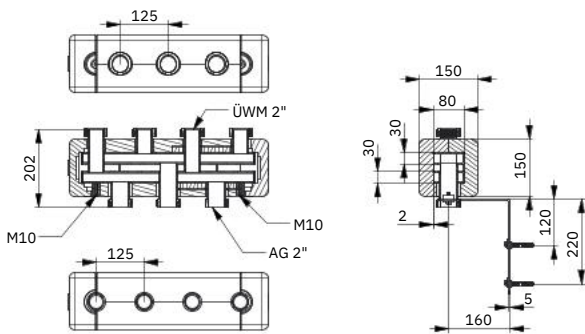


Heating manifold UNI 80 ÜWM

Suitable for:

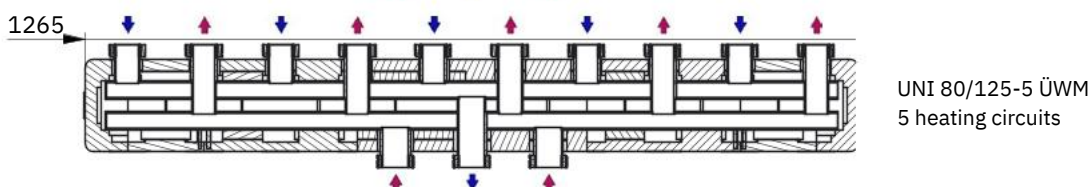
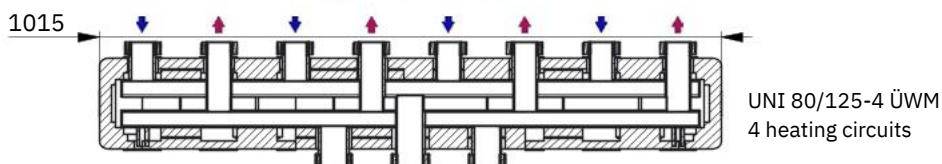
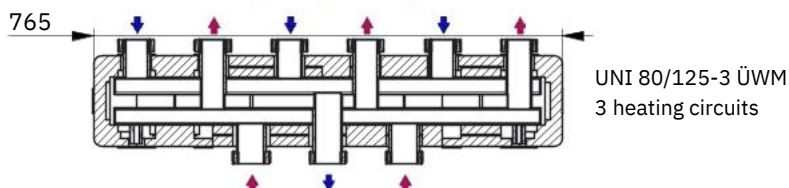
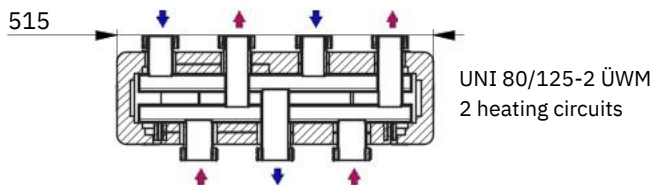


This heating manifold is designed for larger heating systems and enables a heating water flow rate of up to 7 m³/h. With its sturdy steel construction, thermally separated flow and return chambers and a rated output of 170 kW, it is the perfect choice for high-performance systems. To ensure maximum quality and safety, the manifolds are primed at the factory, tested for leaks and have EPP insulation.

- † **Construction:** Steel, brazed, with factory priming and leak-tested.
- † **Outlets:** Upwards, G2" union nut, with nozzle gap of 125 mm.
- † **Boiler connections:** Downwards, R G2" ext. thread.
- † **Performance:** Heating water flow rate of up to 7 m³/h, output of 170 kW at $\Delta t = 20$ °C.
- † **Operating conditions:** Max. operating pressure of 4 bar, max. operating temperature of 90 °C.
- † **Insulation:** Pre-assembled EPP insulation in black, with an insulation thickness of 35 mm, EnEV-compliant, incl. supply and return labeling.
- † incl. wall bracket set WK 80, 1 pair

ORDER NO.

7202200	UNI 80/125-2 ÜWM, length 515 mm, 2 heating circuits
7203200	UNI 80/125-3 ÜWM, length 765 mm, 3 heating circuits
7204200	UNI 80/125-4 ÜWM, length 1015 mm, 4 heating circuits
7205200	UNI 80/125-5 ÜWM, length 1265 mm, 5 heating circuits



incl. wall bracket set made of galvanized steel, extension either 160 mm or 200 mm. Supplied with screws, dowels and washers.