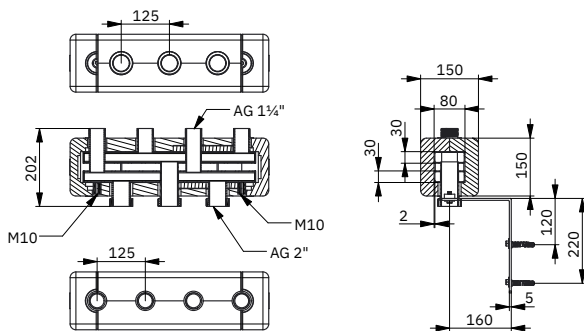


# Heating manifold UNI 80

Suitable for:



This heating manifold is designed for larger heating systems and enables a heating water flow rate of up to 7 m³/h. With its sturdy steel construction, thermally separated flow and return chambers and a rated output of 170 kW, it is the perfect choice for high-performance systems. To ensure maximum quality and safety, the manifolds are primed at the factory, tested for leaks and have EPP insulation.

† **Construction:** Steel, brazed, with factory priming and leak-tested.

† **Outlets:** Upwards, R G1½" external threads, with nozzle gap of 125 mm.

† **Boiler connection:** Downwards, R G2" ext. threads.

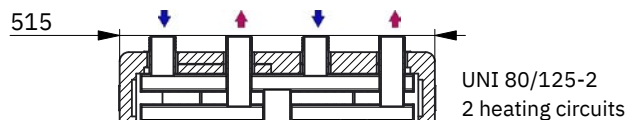
† **Performance:** Heating water flow rate of up to 7 m³/h, output of 170 kW at  $\Delta t = 20^\circ\text{C}$ .

† **Operating conditions:** Max. operating pressure of 4 bar, max. operating temperature of 90 °C.

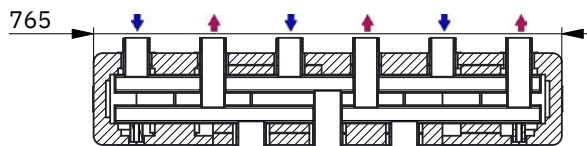
† **Insulation:** Pre-assembled EPP insulation in black, with an insulation thickness of 35 mm, EnEV-compliant, incl. supply and return labeling.

## ORDER NO.

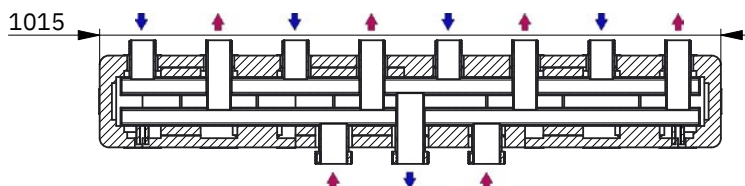
7102200	UNI 80/125-2, length 515 mm, 2 heating circuits
7103200	UNI 80/125-3, length 765 mm, 3 heating circuits
7104200	UNI 80/125-4, length 1015 mm, 4 heating circuits
7105200	UNI 80/125-5, length 1265 mm, 5 heating circuits



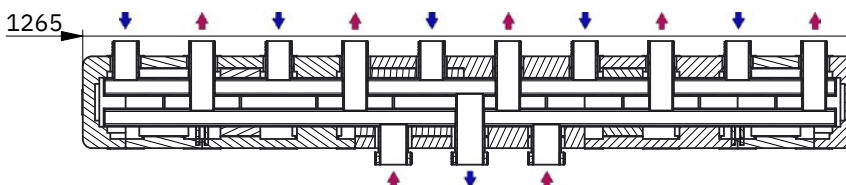
UNI 80/125-2  
2 heating circuits



UNI 80/125-3  
3 heating circuits



UNI 80/125-4  
4 heating circuits



UNI 80/125-5  
5 heating circuits



## ORDER NO.

7401001	WK 80, 1 Paar
---------	---------------

Wall bracket set made of galvanized steel, extension either 160 mm oder 200 mm. Supplied with screws, dowels and washers.