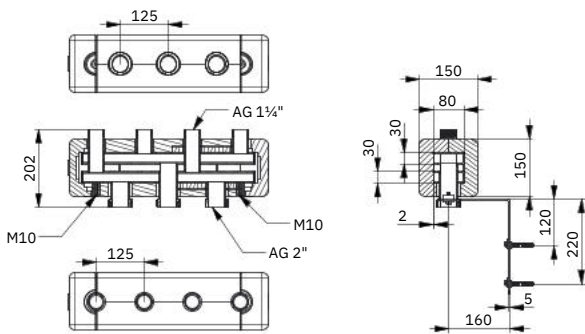


Heating manifold UNI 80 AG

Suitable for:



This heating manifold is designed for larger heating systems and enables a heating water flow rate of up to 7 m³/h. With its sturdy steel construction, thermally separated flow and return chambers and a rated output of 170 kW, it is the perfect choice for high-performance systems. To ensure maximum quality and safety, the manifolds are primed at the factory, tested for leaks and have EPP insulation.

† **Construction:** Steel, brazed, with factory priming and leak-tested.

† **Outlets:** Upwards, R G1¼" external thread, with nozzle gap of 125 mm.

† **Boiler connections:** Downwards, R G2" ext. thread

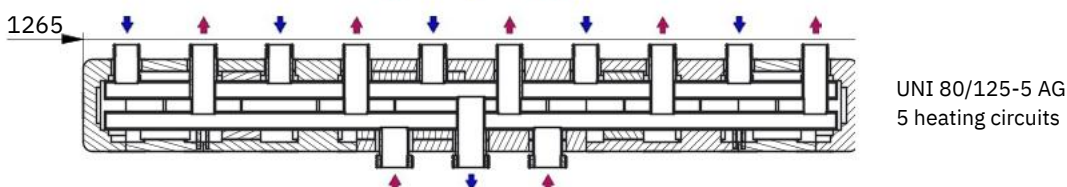
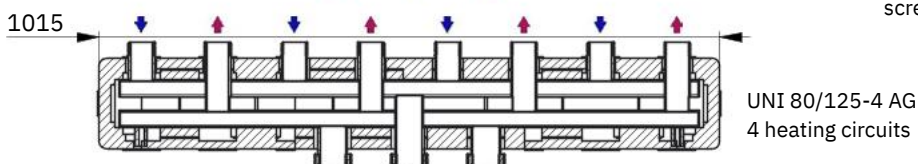
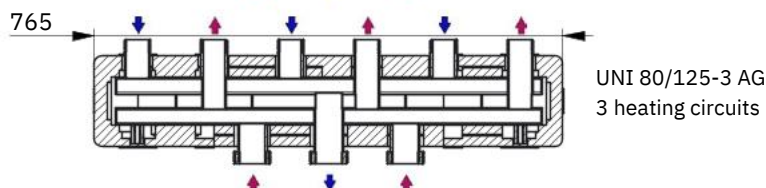
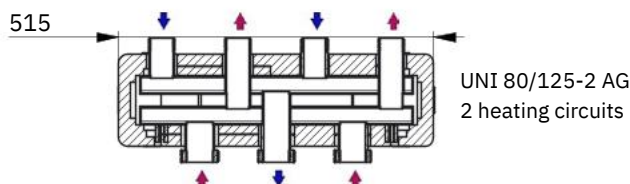
† **Performance:** Heating water flow rate of up to 7 m³/h, output of 170 kW at Δt = 20 °C.

† **Operating conditions:** Max. operating pressure of 4 bar, max. operating temperature of 90 °C.

† **Insulation:** Pre-assembled EPP insulation in black, with an insulation thickness of 35 mm, EnEV-compliant, incl. supply and return labeling.

ORDER NO.

7102200	UNI 80/125-2 AG, length 515 mm, 2 heating circuits
7103200	UNI 80/125-3 AG, length 765 mm, 3 heating circuits
7104200	UNI 80/125-4 AG, length 1015 mm, 4 heating circuits
7105200	UNI 80/125-5 AG, length 1265 mm, 5 heating circuits



ORDER NO.

7401001 WK 80, 1 pair

Wall bracket set made of galvanized steel, extension either 160 mm or 200 mm. Supplied with screws, dowels and washers.