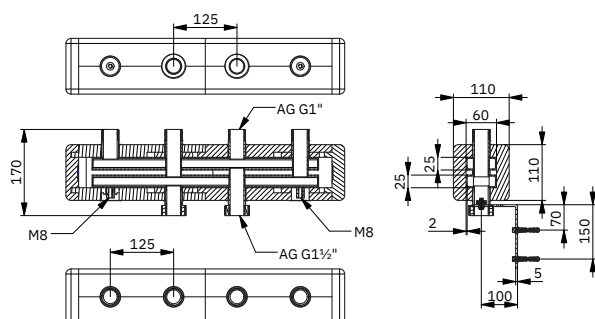


Heating manifold UNI 60

Suitable for:



This heating manifold consists of a sturdy steel construction with thermally separated supply and return chambers. It is specially designed for smaller heating systems and offers a flow rate of 3,3 m³/h, ideal for systems with an output of up to 75 kW. The manifolds are primed and pressure tested at the factory to ensure the highest quality and safety. Pre-installed insulation provides energy efficiency and optimum protection.

† **Construction:** Steel, brazed, with factory priming and leak-tested.

† **Outlets:** Upwards, R G1" external threads, with nozzle gap of 125 mm.

† **Boiler connection:** Downwards, R G1½" ext. threads.

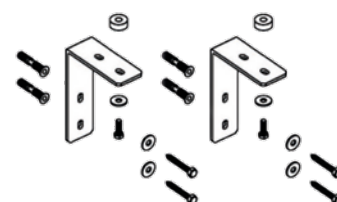
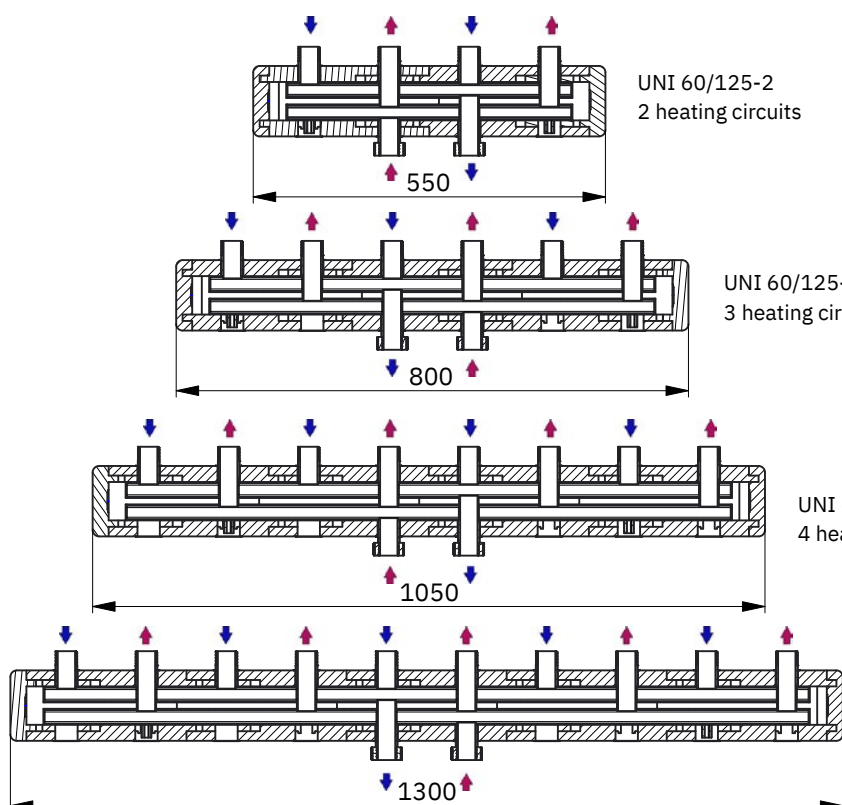
† **Performance:** Heating water flow rate of up to 3,3 m³/h, output of 75 kW at Δt = 20 °C.

† **Operating conditions:** Max. operating pressure of 4 bar, max. operating temperature of 90 °C.

† **Insulation:** Pre-assembled EPP insulation in black, with an insulation thickness of 25 mm, EnEV-compliant, incl. supply and return labeling.

ORDER NO.

6102125	UNI 60/125-2, length 508 mm, 2 heating circuits
6103125	UNI 60/125-3, length 758 mm, 3 heating circuits
6104125	UNI 60/125-4, length 1008 mm, 4 heating circuits
6105125	UNI 60/125-5, length 1258 mm, 5 heating circuits



ORDER NO.

6020001 WK 60, 1 pair

Wall bracket set made of galvanized steel, extension either 100 mm or 150 mm. Supplied with screws, dowels and washers.