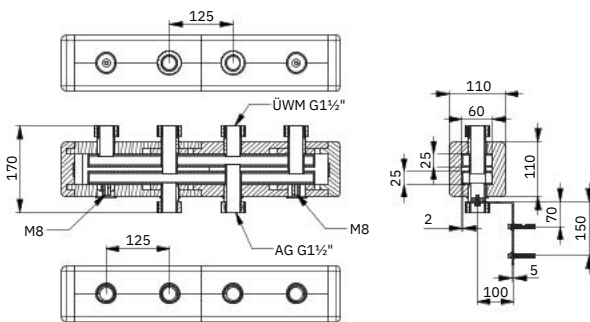


# Heating manifold UNI 60 ÜWM

Suitable for:

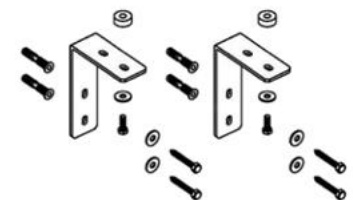
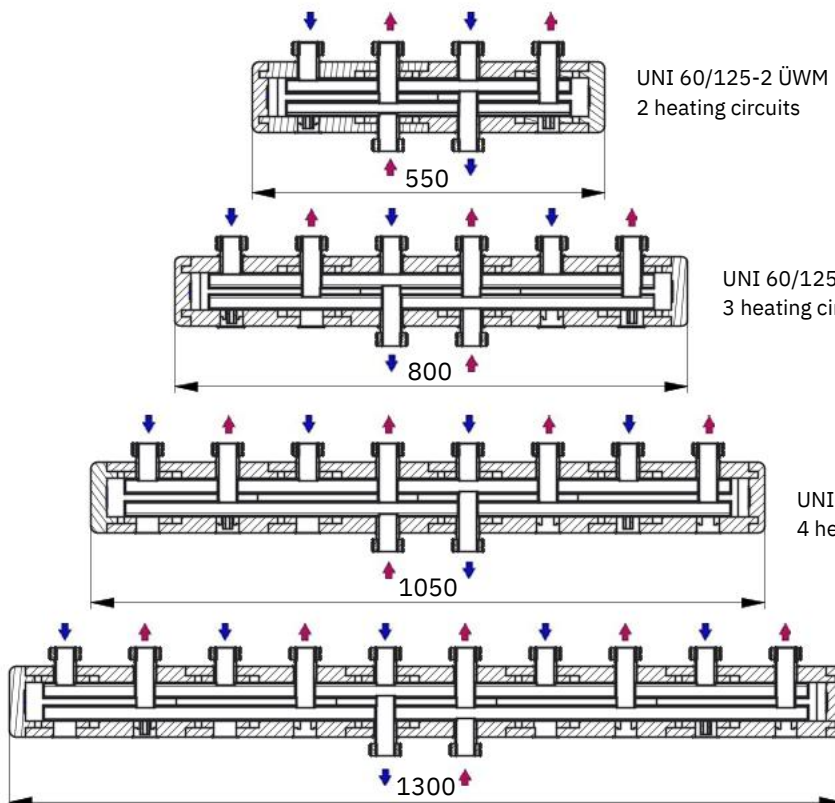


This heating manifold consists of a sturdy steel construction with thermally separated supply and return chambers. It is specially designed for smaller heating systems and offers a flow rate of 3,3 m<sup>3</sup>/h, ideal for systems with an output of up to 75 kW. The manifolds are primed and pressure tested at the factory to ensure the highest quality and safety. Pre-installed insulation provides energy efficiency and optimum protection.

- † **Construction:** Steel, brazed, with factory priming and leak-tested.
- † **Outlets:** Upwards, G1½" union nut, with nozzle gap of 125 mm.
- † **Boiler connections:** Downwards, R G1½" ext. thread.
- † **Performance:** Heating water flow rate of up to 3,3 m<sup>3</sup>/h, output of 75 kW at Δt = 20 °C.
- † **Operating conditions:** Max. operating pressure of 4 bar, max. operating temperature of 90 °C.
- † **Insulation:** Pre-assembled EPP insulation in black, with an insulation thickness of 25 mm, EnEV-compliant, incl. supply and return labeling.
- † incl. wall bracket set WK 60, 1 pair

#### ORDER NO.

<b>6202125</b>	UNI 60/125-2 ÜWM, length 508 mm, 2 heating circuits
<b>6203125</b>	UNI 60/125-3 ÜWM, length 758 mm, 3 heating circuits
<b>6204125</b>	UNI 60/125-4 ÜWM, length 1008 mm, 4 heating circuits
<b>6205125</b>	UNI 60/125-5 ÜWM, length 1258 mm, 5 heating circuits



incl. wall bracket set made of galvanized steel, extension either 100 mm or 150 mm. Supplied with screws, dowels and washers.